

# Mystery Quilt

Coordinator: Pat Cacace

This mystery has been solved. See last page for photo.



The fabric requirements are:

2 ½ yards light fabric

2 ½ yards dark fabric

2 yards medium, focus or contrasting fabric



Rotary Cutter & mat, ruler, pins, sewing machine, scissors, thread

There are six clues and three suspects in this mystery. Follow the directions for each clue.

## CLUE #1:

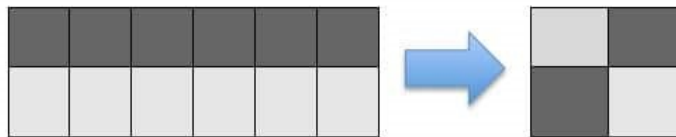
Dark fabric: Cut 6 strips measuring 2 ½" x WOF

Light fabric: Cut 6 strips measuring 2 ½" x WOF

Match the light and dark strips and sew to make strip set.

Cut into 96 segments of 2 ½" each.

Combine the pairs to make 48 four-patch cuttings. Should be a 4 ½" four-patch square.



Any questions, contact Pat Cacace ([Pat1122@gmail.com](mailto:Pat1122@gmail.com)).



## Clue # 2:

Dark fabric – cut 3 strips measuring 4 7/8" x WOF

Light Fabric – cut 3 strips measuring 4 7/8" x WOF

Cut each into squares of 4 7/8" inches.

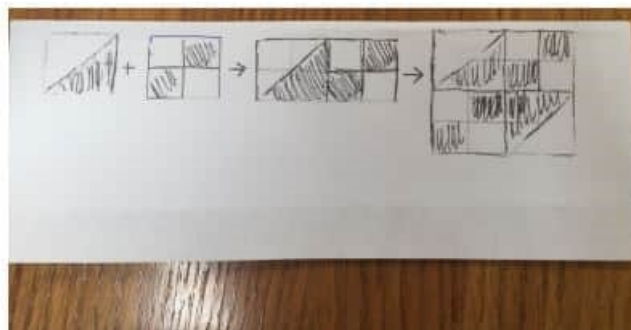
Combine dark and light fabric to make half square

triangles. You should have 48 4 ½" half square triangles.

Combine two units of Clue 1 and two units of Clue 2 to make a large 4-patch.

This combination is called Suspect A.

Any questions, contact Pat Cacace ([Pat1122@gmail.com](mailto:Pat1122@gmail.com)).





Clue # 3:

Dark fabric – Cut 1 strip measuring 4 ½” WOF.  
Sub-cut into six units measuring 4 ½” square.



Yes, this clue is that easy!

Any questions, contact Pat Cacace ([Pat1122@gmail.com](mailto:Pat1122@gmail.com)).



Clue # 4: Medium Fabric – Cut 3 strip measuring 4 ½” WOF.

Cut apart every 4 ½” to yield 24 squares.



Any questions, contact Pat Cacace ([Pat1122@gmail.com](mailto:Pat1122@gmail.com)).



Yes this is similar to Clue #1.

Hang in there, we're almost done! Only 3 more clues to go!

CLUE #5:

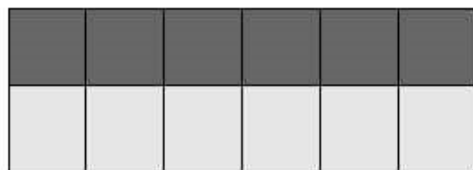
Dark fabric: Cut 3 strips measuring 2 ½” x WOF

Light fabric: Cut 3 strips measuring 2 ½” x WOF

Match the light and dark strips and sew to make strip set.

Cut into 48 segments of 2 ½” each.

Combine the pairs to make 24 four-patch cuttings. Should be a 4 ½” four-patch square.



Any questions, contact Pat Cacace ([Pat1122@gmail.com](mailto:Pat1122@gmail.com)).



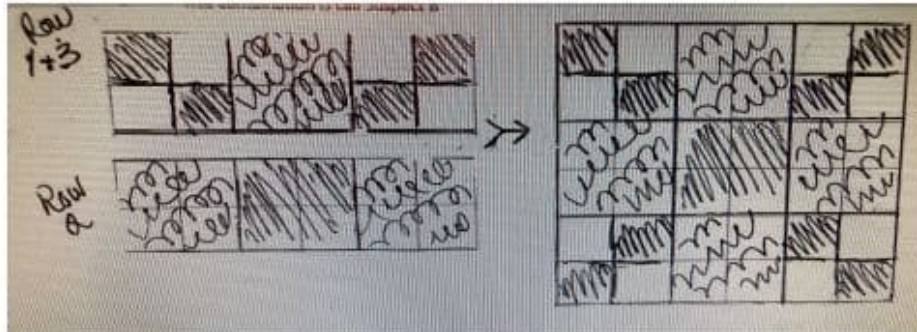
## CLUE #6

This step involves bring some of the clues together again. Make a square of three rows in the following arrangement:

Row 1: Clue 5 4-patch sewn to Clue 4 sewn to another Clue 5 4-patch

Row 2: Clue 4 sewn to Clue 3 to another Clue 4

Row 3: Repeat Row 1. You should have 6 sets of this large 9-patch. This combination is called Suspect B.



Any questions, contact Pat Cacace ([Pat1122@gmail.com](mailto:Pat1122@gmail.com)).

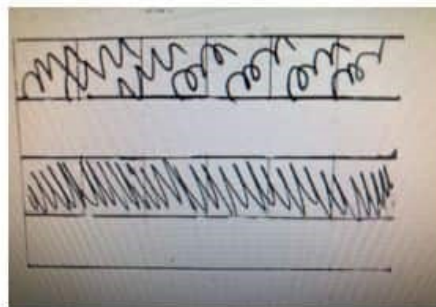


**CLUE #7** - Medium fabric – cut 8 strips measuring 2 ½" x WOF  
Dark fabric – cut 8 strips 2 ½" x WOF  
Light fabric – cut 16 strips 2 ½" x WOF

Sew together in the following arrangement:  
Medium to light to dark to light. Sub-cut apart to 12 ½".  
You should have 24 4-stripped sections.  
This combination is called Suspect C.



**TIP:** Before cutting Suspect C into strips, check the size and seam allowances for Suspect A to be sure the two patterns match.



Any questions, contact Pat Cacace ([Pat1122@gmail.com](mailto:Pat1122@gmail.com)).



## Solved

**Clue 8:** With all three suspects identified, the next step is to combine the patterns into a giant 9-patch in the following arrangement:

Column 1: Suspect A sew to Suspect C sewn to Suspect A

Column 2: Suspect C sew to Suspect B sewn to Suspect C

Column 3: Suspect A sewn to Suspect C sewn to Suspect A

The finished 9-patch solves the mystery and yields a ninth of the entire quilt. Six of these 9-patches complete the quilt that is called *Thrifty Stars*. Make 5 more blocks by repeating steps 1-8 and then sew all the blocks together to form a star in the middle of the quilt.



Any questions, contact Pat Cacace ([Pat1122@gmail.com](mailto:Pat1122@gmail.com)).

